

# *Great American Conservative WOMEN*



Catch a glimpse into what life is like for today's leading conservative women when they step outside the spotlight.

*Clare Boothe  
Luce Policy  
Institute  
Calendar*



# 2012



“ Courage is the ladder on which all the other virtues mount. ”

- Clare Boothe Luce

## ***Dear Friend,***

For seven years, the Luce Policy Institute's Great American Conservative Women Calendar has been an exceptional way to showcase part of the Institute's mission by highlighting the achievements of America's top conservative women leaders. Each year, thousands of these calendars are put into the hands of students, supporters, media, and those serving in the military.

Our 2012 calendar's theme is "Life Outside the Spotlight." This year's edition gives you a unique look at the lives some of your favorite women live outside of their everyday jobs as Conservative Movement leaders. Each of this year's calendar ladies chose her own location to tell something about her life outside of the political spotlight, and each photo is paired with a personal quote about the picture.

The women featured in this calendar play an integral part in advancing the Institute's mission to prepare and promote conservative women leaders. These outstanding role models prepare young women for leadership by speaking to them at our monthly Conservative Women's Network events, leadership training seminars, mentoring lunches, and our Leading Ladies Campus Lecture Program.

Founded in 1993, the Luce Policy Institute fills a unique and valuable niche within the Conservative Movement, reaching America's young women with conservative ideas and helping them fight back against liberal bias on college campuses. We work closely with young women, preparing them to advance individual freedom, economic liberty, limited government, traditional values, and personal responsibility.

We hope you enjoy the 2012 calendar's "Life Outside the Spotlight" theme, and we thank you for all you do to support the Clare Boothe Luce Policy Institute!

Sincerely,

President,  
Clare Boothe Luce Policy Institute

# 2012

# 2012 Calendar

credits



## CLARE BOOTHE LUCE POLICY INSTITUTE

*Preparing and Promoting Conservative Women Leaders*

### Contributors

Alyssa Cordova,

Editor

Jonah Koch,  
www.kochfoto.com

Photography

Tara French Johnson,  
www.mercy-design.com

Graphic Design

### Special Thanks

Avi Toledo

www.shopsatcolumbuscircle.com

Montmartre, NYC

Frank Bonucci

www.detroitssymphony.com

Max M. Fisher Music Center, Detroit

Photo of Clare Boothe Luce by David  
Goodnow from August 11, 1958,  
issue of Sports Illustrated

### CBLPI Board

Michelle Easton,

President

Frank Donatelli,  
Secretary/Treasurer

Kellyanne Conway

Barb Kenney

Clare Luce

Ursula Meese

Kate Obenshain

Darla Partridge

Marji Ross

### CBLPI staff

Michelle Easton,

President

Tiffany Bradley,  
Director of Philanthropy

Alyssa Cordova,

Lecture Director

Camille Hart,

Special Assistant to the  
President

Catherine Helsley,  
Administrative Assistant

Kristen Johnson,

Accounting Manager

Jeanne O'Connor,

Administrative Director

Lil Tuttle,

Education Director



MERCY  
DESIGN  
LLC

112 Elden Street • Suite P • Herndon, Virginia • 20170 • (888) 891-4288 • cblpi.org  
The 2012 Great American Conservative Women Calendar is a publication of the Clare Boothe Luce Policy Institute, a tax-exempt organization which is organized and operates in accordance with section 501(c)(3) of the Internal Revenue Code. The Institute does not support, endorse or oppose candidates for public office.





# *Clare Boothe Luce*

*Clare Boothe Luce- Scuba Diving in the Bahamas*

"However often I may go, the moment of gearing up, of passing through the Salt Curtain, is a moment of excitement."

S M T W T F S

December 2011		27	28	29	30	31
	1 2 3					
4 5 6 7 8 9 10						
11 12 13 14 15 16 17						
18 19 20 21 22 23 24						
25 26 27 28 29 30 31						
1	2	3	4	5	6	7
New Year's Day						
8	9	10	11	12	13	14
					Lee-Jackson Day	
15	16	17	18	19	20	21
	Martin Luther King, Jr. Day					
22	23	24	25	26	27	28
29	30	31	1	2	February 2012	
					1 2 3 4	
					5 6 7 8 9 10 11	
					12 13 14 15 16 17 18	
					19 20 21 22 23 24 25	
					26 27 28 29	

# January

***Playwright-turned-U.S. Ambassador Clare Boothe Luce (1903-1987)—the namesake of the Clare Boothe Luce Policy Institute—was the editor of Vanity Fair, as well as a U.S. Congresswoman from Connecticut. A wife, mother, and a woman of deep faith, Mrs. Luce's extraordinary sense of humor was epitomized by her famous quote, "No good deed goes unpunished."***

***To host a lecture with a Luce campus speaker at your school, please call 888-891-4288 or visit our website at [www.cblpi.org](http://www.cblpi.org).***

## Notes:

---

---

---

---

---

---

---

---

---

---





## ***Kate Obenshain***

***Kate Obenshain– Making cookies at home with her family in Virginia***

"The most precious, and most important, title I have is 'mom.' I want nothing more than to pass liberty—that liberty our founders secured for us—on to my four children, not just intact, but expanded. And while they are young, I treasure every moment that I'm blessed to spend with them."

S M T W T F S

January 2012							31	1	2	3	4
1	2	3	4	5	6	7					
8	9	10	11	12	13	14					
15	16	17	18	19	20	21					
22	23	24	25	26	27	28					
29	30	31						National Freedom Day	Groundhog Day		
5	6	7	8	9	10	11					
	Ronald Reagan's Birthday (1911)										
12	13	14	15	16	17	18					
Lincoln's Birthday		Valentine's Day									
19	20	21	22	23	24	25					
	Presidents Day Washington's Birthday (observed)		Ash Wednesday								
26	27	28	29	1	2	3					
4	5	6	7	8	March 2012						
							1	2	3		
							4	5	6	7	8
							11	12	13	14	15
							18	19	20	21	22
							25	26	27	28	29

# February

**Kate Obenshain is Vice President of Young America's Foundation and can be seen regularly on Fox News. Kate was the chairman of the Virginia GOP from 2003-2006, leading the fight against tax increases and the expanding role of government. She is a member of the Luce Policy Institute's Board of Directors and the 2005 recipient of the Institute's Conservative Leadership Award. Most importantly, Kate is the mother of her four young children.**

**To host a lecture with a Luce campus speaker at your school, please call 888-891-4288 or visit our website at [www.cblpi.org](http://www.cblpi.org).**

## Notes:

---

---

---

---

---

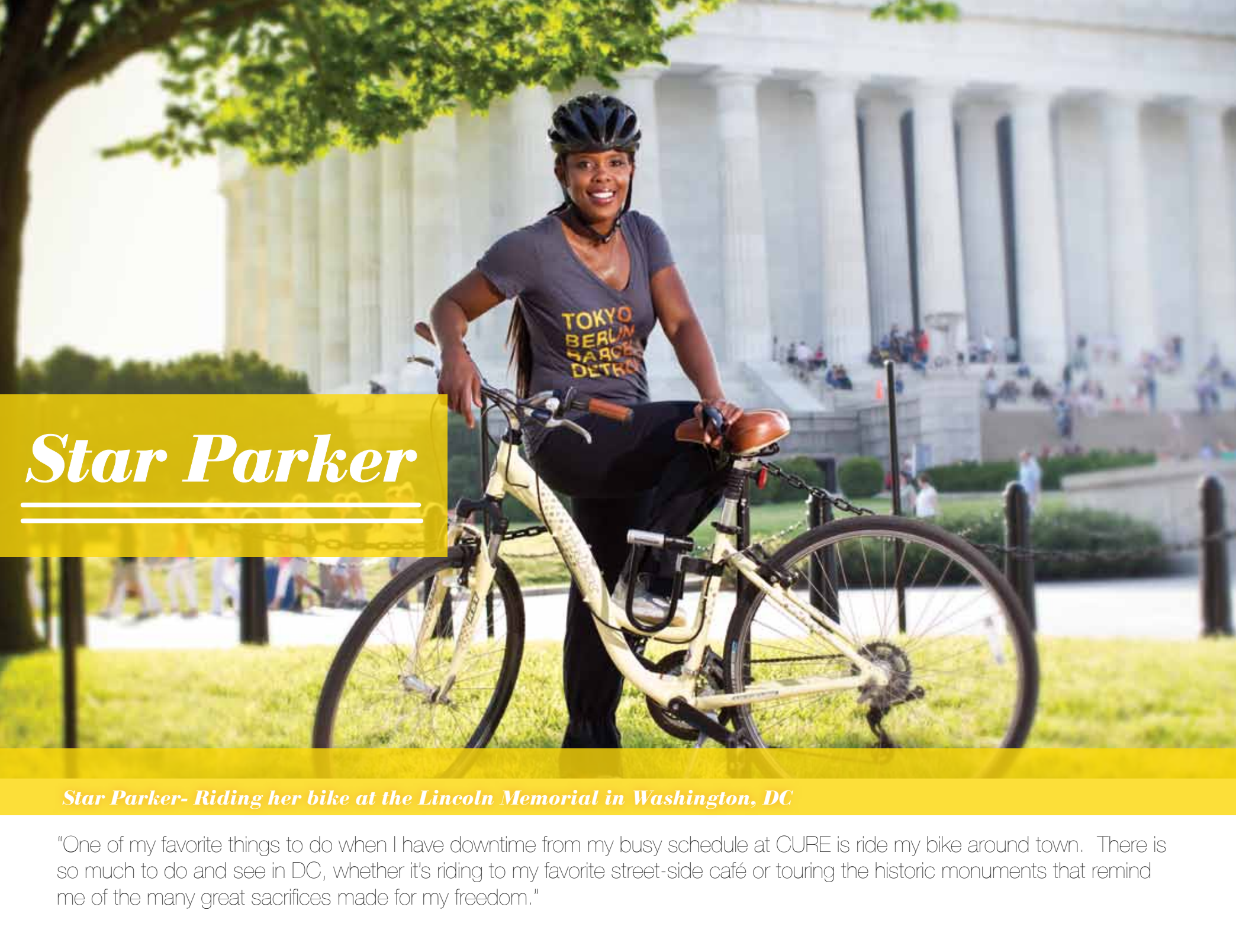
---

---

---

---

---



# *Star Parker*

*Star Parker- Riding her bike at the Lincoln Memorial in Washington, DC*

"One of my favorite things to do when I have downtime from my busy schedule at CURE is ride my bike around town. There is so much to do and see in DC, whether it's riding to my favorite street-side café or touring the historic monuments that remind me of the many great sacrifices made for my freedom."



S M T W T F S

February 2012		28	29	1	2	3
	1 2 3 4					
5	6 7 8 9 10 11					
12	13 14 15 16 17 18					
19	20 21 22 23 24 25					
26	27 28 29					
4	5	6	7	8	9	10
11	12	13	14	15	16	17
Daylight Saving Time Begins (set clocks one hour ahead)						St. Patrick's Day
18	19	20	21	22	23	24
		First Day of Spring				
25	26	27	28	29	30	31
1	2	3	4	5	April 2012	
					1 2 3 4 5 6 7	
					8 9 10 11 12 13 14	
					15 16 17 18 19 20 21	
					22 23 24 25 26 27 28	
					29 30	

# March

***A former single welfare mother who turned her life around, Star Parker is a champion for personal responsibility. The founder and president of CURE, the Center for Urban Renewal and Education, Star is a national expert on social policy and has been featured on major television and radio shows across the country.***

***To host a lecture with a Luce campus speaker at your school, please call 888-891-4288 or visit our website at [www.cblpi.org](http://www.cblpi.org).***

## Notes:

---

---

---

---

---

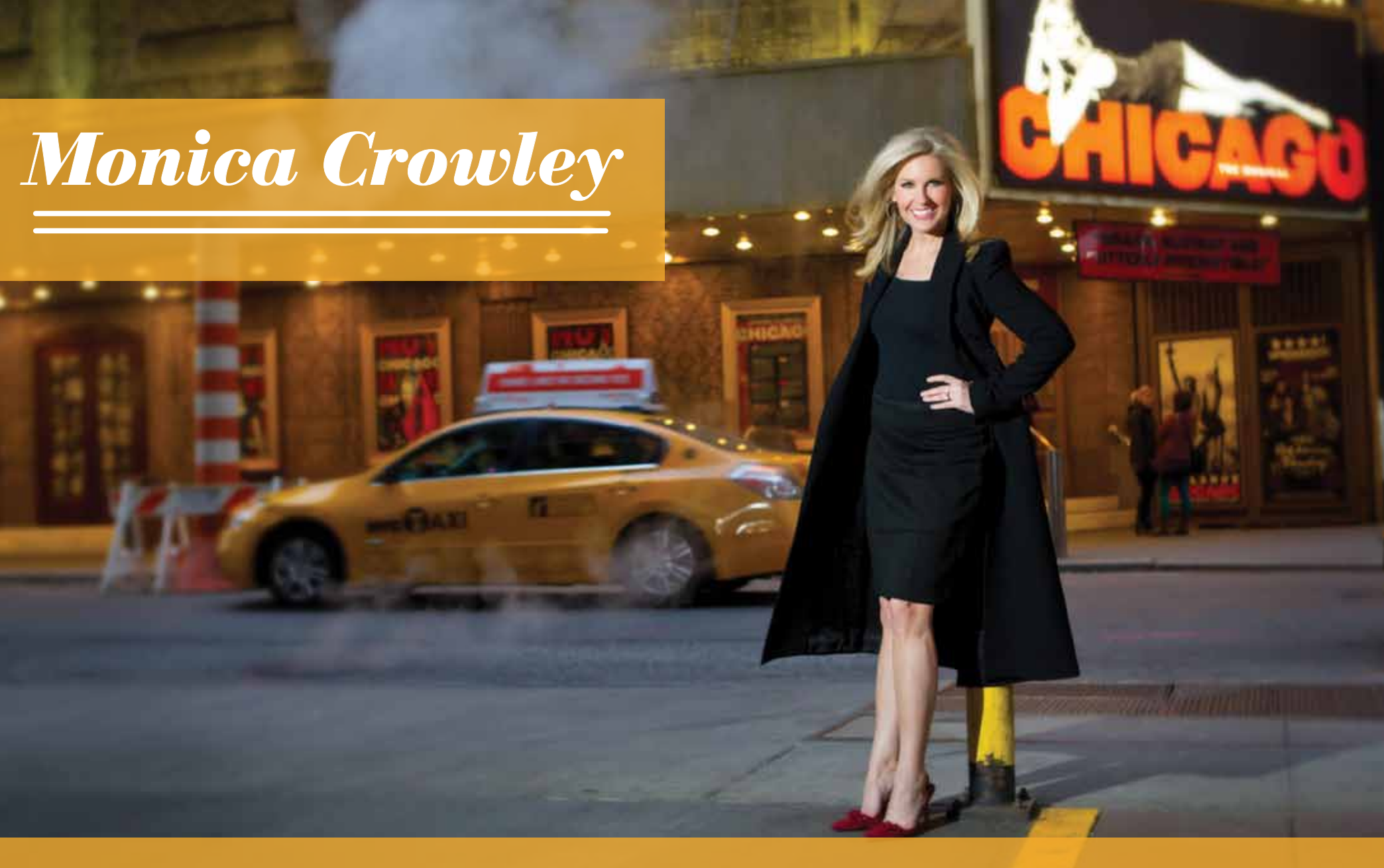
---

---

---

---

---



# *Monica Crowley*

*Monica Crowley- Catching a show at the Ambassador Theater in New York City*

"By day, I deal with the drama of politics. By night, I love to escape into the drama of a great movie or live theater. There's nothing quite like sitting in a darkened theater, watching a dynamic story come to life."

S M T W T F S

March 2012							27		28		29		30		31				
4	5	6	7	1	2	3													
11	12	13	14	8	9	10													
18	19	20	21	15	16	17													
25	26	27	28	22	23	24													
1				2			3		4		5		6		7				
Palm Sunday April Fool's Day													Good Friday		First Day of Passover				
8				9			10		11		12		13		14				
Easter				Easter Monday			Clare Boothe Luce's Birthday (1903)												
15				16			17		18		19		20		21				
22				23			24		25		26		27		28				
29				30			1		2		3		May 2012						
													1	2	3	4	5		
													6	7	8	9	10	11	12
													13	14	15	16	17	18	19
													20	21	22	23	24	25	26
													27	28	29	30	31		

# April

**Monica Crowley is a panelist on the legendary program “The McLaughlin Group,” a political and foreign affairs analyst for the Fox News Channel, and host of the nationally syndicated radio program, “The Monica Crowley Show.” She served as Foreign Policy Assistant to former President Richard Nixon from 1990 until his death in 1994, and wrote two bestsellers about her experiences, *Nixon Off the Record* and *Nixon in Winter*. She has also written for The New Yorker, The Wall Street Journal, The Los Angeles Times, Newsweek, and The New York Post. In 2010 Monica was named the Institute’s Woman of the Year. She holds two Master’s degrees and a doctorate from Columbia University.**

**To host a lecture with a Luce campus speaker at your school, please call 888-891-4288 or visit our website at [www.cblpi.org](http://www.cblpi.org).**

**Notes:**

---

---

---

---

---

---

---

---

---

---

A woman with blonde hair, wearing a white sleeveless top and a pearl necklace, is sitting at a small white round table outdoors. She is smiling and holding a coffee cup in her right hand and a newspaper in her left. The background shows a street scene with trees, a red building, and other people sitting at tables.

# *Ann Marie Buerkle*

***Ann Marie Buerkle— Having coffee at an Eastern Market café in Washington, DC***

"One great way to start my mornings in Washington is with a run or a walk around the Capital. Then I go to Eastern Market for a cup of coffee at a local café and catch up on the news or go over my schedule for the day."



S M T W T F S

April 2012							1	2	3	4	5
1	2	3	4	5	6	7					
8	9	10	11	12	13	14					
15	16	17	18	19	20	21					
22	23	24	25	26	27	28			National Day of Prayer		
29	30										
6		7		8	9	10	11	12			
				V-E Day (1945)							
13		14		15	16	17	18	19			
Mother's Day										Armed Forces Day	
20		21		22	23	24	25	26			
27		28		29	30	31	1	2			
		Memorial Day									
3		4		5	6	7	June 2012				
										1	2
							3	4	5	6	7
							8	9	10	11	12
							13	14	15	16	17
							18	19	20	21	22
							23	24	25	26	27
							28	29	30		

# May

***Ann Marie Buerkle is a life-long Central New Yorker who proudly represents the people of New York State's 25th Congressional District. She was elected to the United States House of Representatives in the 2010 general election and took the oath of office on January 5, 2011. She is the mother of 6 and a grandmother of 11. Her love for this country and her desire to give her kids and grandkids the same opportunities that she has had inspired her to run for Congress.***

***To host a lecture with a Luce campus speaker at your school, please call 888-891-4288 or visit our website at [www.cblpi.org](http://www.cblpi.org).***

## Notes:

---

---

---

---

---

---

---

---

---

---

A photograph of Renee Ellmers, a woman with blonde hair, wearing purple scrubs and a stethoscope. She is standing in a hospital room, with medical equipment and monitors visible in the background. A teal banner is overlaid on the left side of the image, containing her name.

# *Renee Ellmers*

## ***Renee Ellmers- At WakeMed in Raleigh, North Carolina***

"Before being elected to Congress I had practiced as a nurse for over 21 years and owned a small medical practice with my husband, a surgeon, in North Carolina. Health care is the reason I got involved in politics. I was shocked to see the profession I had given my life to being destroyed in an instant by a corrupt, confusing, and irresponsible law. Now that I am in Washington, I am taking those lessons and skills and using them to repair the health of our nation and bring prosperity back to all Americans."

S M T W T F S

<div>May 2012</div> <div> <div>12</div> <div>13</div> <div>14</div> <div>15</div> <div>16</div> <div>17</div> <div>18</div> <div>19</div> <div>20</div> <div>21</div> <div>22</div> <div>23</div> <div>24</div> <div>25</div> <div>26</div> <div>27</div> <div>28</div> <div>29</div> <div>30</div> <div>31</div> </div>						
3	4	5	6	7	8	9
10	11	12	13	14	15	16
17	18	19	20	21	22	23
24	25	26	27	28	29	30
1	2	3	4	5	<div>July 2012</div> <div> <div>6</div> <div>7</div> <div>8</div> <div>9</div> <div>10</div> <div>11</div> <div>12</div> <div>13</div> <div>14</div> <div>15</div> <div>16</div> <div>17</div> <div>18</div> <div>19</div> <div>20</div> <div>21</div> <div>22</div> <div>23</div> <div>24</div> <div>25</div> <div>26</div> <div>27</div> <div>28</div> <div>29</div> <div>30</div> <div>31</div> </div>	

# June

***Before her election to Congress, Ellmers worked as a Surgical Intensive Care Nurse and then with her husband Brent as Clinical Director of a wound care clinic in her home state of North Carolina. In 2009, she and her husband attended a Town Hall meeting to hear her Congressman speak on behalf of President Obama's health care plan. Later, as a volunteer, she became an outspoken critic of government-run health care. Her involvement in the debate over health care led her to run for a seat in the United States Congress in 2010, where she now serves the people of North Carolina's second district.***

***To host a lecture with a Luce campus speaker at your school, please call 888-891-4288 or visit our website at [www.cblpi.org](http://www.cblpi.org).***

**Notes:**

---

---

---

---

---

---

---

---

---

---

# ***Jaime Herrera Beutler***



***Jaime Herrera Beutler– Walking her dogs near the U.S. Capitol Building in Washington, DC***

"President Truman said, 'If you want a friend in Washington, get a dog.' Well, I have two. When I'm not working in Congress, I like to take my dogs on walks around the city. It allows me to see all of the historic sites of Washington, DC. Though I miss home in Southwest Washington State, these walks give me pride in our country and reaffirm my passion for public service."



S M T W T F S

June 2012								27	28	29	30	31
3	4	5	6	7	8	9						
10	11	12	13	14	15	16						
17	18	19	20	21	22	23						
24	25	26	27	28	29	30						
1	2	3	4	5	6	7						
			Independence Day									
8	9	10	11	12	13	14						
15	16	17	18	19	20	21						
22	23	24	25	26	27	28						
					National Korean War Veterans Armistice Day							
29	30	31	1	2	August 2012							
					5	6	7	8	9	10	11	
					12	13	14	15	16	17	18	
					19	20	21	22	23	24	25	
					26	27	28	29	30	31		

July

***Jaime Herrera Beutler was elected to the 112th Congress in 2010 to represent Southwest Washington's 3rd District. A native of Southwest Washington, Jaime brings legislative experience, an independent voice and a desire to serve her home community to Washington, DC. Jaime attended the University of Washington, earning her Bachelor of Arts degree in Communications. She's working hard to change direction and reverse the policies that are driving America further into debt and killing the opportunities for new job creation. Jaime states her purpose very clearly: "I will be a member of Congress more concerned with saving your money than spending your money."***

***To host a lecture with a Luce campus speaker at your school, please call 888-891-4288 or visit our website at [www.cblpi.org](http://www.cblpi.org).***

***Notes:***

---

---

---

---

---

---

---

---

---

---

# *Ann Coulter*



***Ann Coulter– Overlooking Central Park in New York City***

"Taking a break from my non-stop schedule of writing columns and books, giving speeches at universities, and weekly appearances on all the major TV news networks, I sometimes pause to reflect on just how much I despise Janet Napolitano."

S M T W T F S

<b>July 2012</b> 1 2 3 4 5 6 7 8 9 10 11 12 13 14 15 16 17 18 19 20 21 22 23 24 25 26 27 28 29 30							31	1	2	3	4
5	6	7	8	9	10	11	Coast Guard Day				
12	13	14	15	16	17	18					
19	20	21	22	23	24	25					
26	27	28	29	30	31	1					
2	3	4	5	6	<b>September 2012</b> 1 2 3 4 5 6 7 8 9 10 11 12 13 14 15 16 17 18 19 20 21 22 23/30 24 25 26 27 28 29						

# August

***Ann Coulter is the author of eight New York Times best-sellers, a popular syndicated columnist, and a frequent TV pundit. She is the 2001 recipient of the Luce Policy Institute's Conservative Leadership Award and in 2004 was named the Institute's Woman of the Year.***

***To host a lecture with a Luce campus speaker at your school, please call 888-891-4288 or visit our website at [www.cblpi.org](http://www.cblpi.org).***

***Notes:***

---

---

---

---

---

---

---

---

---

---

A high-angle photograph of Michelle Malkin sitting on a black bench and playing a black grand piano. She is wearing a grey, short-sleeved, ruffled dress. Her eyes are closed, and she has a serene expression. The piano is open, showing the internal mechanism. The floor is made of large, light-colored stone tiles. A teal banner is overlaid on the right side of the image, containing her name in white serif font, underlined with two lines.

# ***Michelle Malkin***

***Michelle Malkin– Playing the piano at the Max M. Fisher Music Center in Detroit, MI***

"I am honored and blessed to make a living writing and speaking out for conservative principles and traditional values, but sometimes it's nice to escape the constant buzz of the media/political world. When I get a free moment to myself one of my go-to places is the piano -- where music, as Berthold Auerbach wrote, 'washes away from the soul the dust of everyday life.'"



S M T W T F S

August 2012		28	29	30	31	1
5	6	7	8	9	10	11
12	13	14	15	16	17	18
19	20	21	22	23	24	25
26	27	28	29	30	31	
2	3	4	5	6	7	8
	Labor Day					
9	10	11	12	13	14	15
Grandparents Day		Patriot Day				
16	17	18	19	20	21	22
	Constitution Day Rosh Hashanah				POW/MIA Recognition Day	First Day of Autumn
23	24	25	26	27	28	29
			Yom Kippur			
30	1	2	3	4	October 2012	
					1	2
					3	4
					5	6
					7	8
					9	10
					11	12
					13	14
					15	16
					17	18
					19	20
					21	22
					23	24
					25	26
					27	28
					29	30
					31	

# September

**Michelle Malkin is a blogger, columnist, author, pundit, wife, and mother who got her start as a newspaper journalist in 1992. She is the recipient of the Luce Policy Institute's 2004 Conservative Leadership Award, and her blog [MichelleMalkin.com](http://MichelleMalkin.com) has more than 6 million monthly page views and 1 million monthly unique visitors.**

**To host a lecture with a Luce campus speaker at your school, please call 888-891-4288 or visit our website at [www.cblpi.org](http://www.cblpi.org).**

## Notes:

---

---

---

---

---

---

---

---

---

---



## ***Andrea Tantaros***

### ***Andrea Tantaros– Shopping at Montmartre in New York City***

"I love being able to defend Capitalism and other conservative values on Fox News and in the New York Daily News. But nothing is more fun than being able to put it into practice with some retail therapy when I'm not on the air or writing."

S	M	T	W	T	F	S
September 2012 1 2 3 4 5 6 7 8 9 10 11 12 13 14 15 16 17 18 19 20 21 22 23/30 24 25 26 27 28 29		25	26	27	28	29
30	1	2	3	4	5	6
7	8 Columbus Day	9	10	11	12	13 Margaret Thatcher's Birthday (1925)
14	15	16	17	18	19	20
21	22	23	24	25	26	27
28	29	30	31 Halloween	1	November 2012 1 2 3 4 5 6 7 8 9 10 11 12 13 14 15 16 17 18 19 20 21 22 23 24 25 26 27 28 29 30	

# October

**Andrea Tantaros is a national political commentator, columnist and political contributor for the Fox News Channel. Her writing appears in the NY Daily News, on Fox News.com and in Newsmax magazine. In her career she has served as a senior advisor on a number of high-profile political campaigns and spent years working on Capitol Hill as Press Secretary for Republican Leadership.**

**To host a lecture with a Luce campus speaker at your school, please call 888-891-4288 or visit our website at [www.cblpi.org](http://www.cblpi.org).**

## Notes:

---

---

---

---

---

---

---

---

---

---



# *S.E. Cupp*

***S.E. Cupp– Grabbing a hot dog in Washington, DC***

"I miss the days of long, lazy lunches with friends. Now it's grabbing a bite on the street in between meetings on the Hill or shoots in New York. But I'm a simple girl at heart, and I don't need much to make me happy."



S M T W T F S

October 2012						
1	2	3	4	5	6	
7	8	9	10	11	12	13
14	15	16	17	18	19	20
21	22	23	24	25	26	27
28	29	30	31			
4	5	6	7	8	9	10
Daylight Savings Time Ends (Shift Clocks Back One Hour)		Election Day			World Freedom Day Fall of the Berlin Wall (1989)	Marine Corps Day
11	12	13	14	15	16	17
Veteran's Day						
18	19	20	21	22	23	24
				Thanksgiving Day		
25	26	27	28	29	30	1
2	3	4	5	6	December 2012	
						1
					2	3
					4	5
					6	7
					8	9
					10	11
					12	13
					14	15
					16	17
					18	19
					20	21
					22	23
					24	25
					26	27
					28	29
					30	31

# November

**S.E. Cupp is an author, political commentator, and columnist. S.E. is the author of *Losing our Religion: the Liberal Media's Attack on Christianity* and co-author of *Why You're Wrong about the Right*. She writes a regular column for the *Daily Caller* and *New York Daily News* and her work has also been published in the *Washington Post*, *American Spectator*, *Human Events*, *Townhall.com*, and *FOXNews.com*. She has appeared on each of the major news networks and is a regular guest on the Fox News Channel.**

**To host a lecture with a Luce campus speaker at your school, please call 888-891-4288 or visit our website at [www.cblpi.org](http://www.cblpi.org).**

## Notes:

---

---

---

---

---

---

---

---

---

---

A photograph of Michele Bachmann sitting on a wooden bench in a garden. She is wearing a yellow jacket over a black and white patterned dress. The background is a blurred garden with yellow flowers and green foliage. A yellow banner is overlaid on the left side of the image, containing her name.

# ***Michele Bachmann***

***Michele Bachmann– Touring the National Arboretum in Washington, DC***

"Traveling across our nation, I always find the true spirit of America in our magnificent people and places. I am honored to represent the great state of Minnesota, a part of 'America the Beautiful.'"

S M T W T F S

November 2012				27	28	29	30	1
4	5	6	7	1	2	3		
11	12	13	14	8	9	10		
18	19	20	21	15	16	17		
25	26	27	28	22	23	24		
2	3	4	5	6	7	8		
					Pearl Harbor Day			
9	10	11	12	13	14	15		
First Day of Hanukkah								
16	17	18	19	20	21	22		
					First Day of Winter			
23	24	25	26	27	28	29		
	Christmas Eve	Christmas Day						
30	31	1	2	3	January 2013			
	New Year's Eve				1	2	3	4
					6	7	8	9
					13	14	15	16
					20	21	22	23
					27	28	29	30

# December

***Congresswoman Michele Bachmann proudly serves the 6th district of Minnesota as an unwavering defender of conservatism in Congress. In 2010 Representative Bachmann was awarded the Luce Policy Institute's Conservative Leadership Award. She is the first conservative woman to be elected to the U.S. House of Representatives from Minnesota, and her example has served as an inspiration to the young women who have heard her speak at Luce Policy Institute events. She is a loving wife and mother of five and has opened her home to twenty-three foster children.***

***To host a lecture with a Luce campus speaker at your school, please call 888-891-4288 or visit our website at [www.cblpi.org](http://www.cblpi.org).***

## Notes:

---

---

---

---

---

---

---

---

---

---





## *Clare Boothe Luce Policy Institute Calendar*



## *Great American Conservative Women*

# 2012

The 2012 Great American Conservative Women Calendar is a publication of the Clare Boothe Luce Policy Institute, a tax-exempt organization which is organized and operates in accordance with section 501(c)(3) of the Internal Revenue Code. The Institute does not support, endorse or oppose candidates for public office.

112 Elden Street • Suite P • Herndon, Virginia • 20170  
(888) 891-4288 • [cblpi.org](http://cblpi.org)