

# *Great American Conservative* **WOMEN**



# 2014

*Clare Boothe  
Luce Policy  
Institute  
Calendar*





“ Courage is the ladder on which all the other virtues mount. ”

- Clare Boothe Luce

## ***Dear Friend,***

As we present this calendar to you, the Clare Boothe Luce Policy Institute is celebrating 20 years of preparing and promoting conservative women leaders. Since our founding in 1993, we've impacted the lives of thousands of women through our training seminars, conferences, lectures, and educational programs. We're proud that after years of work, the conservative movement now has the most vibrant and varied women leaders in history. From government officials to journalists to policy experts, conservative women leaders are changing lives and leading our country back to its founding principles of liberty and economic freedom.

This calendar is just one of the ways the Institute highlights great American conservative women. In our ninth edition, we feature a few of the many exceptional ladies the Institute promotes and who have spoken in the past year at our luncheons, conferences, and seminars. We hope the photos of these women, taken exclusively for the Luce Policy Institute, serve as a daily reminder to you of the important role women leaders play in our country's policy debates, and that you are inspired to do even more to advance our conservative values.

Our work at Luce goes far beyond educating women on today's issues. With your help, we are having an enduring positive impact in changing the course of the nation.

Sincerely,

President,  
Clare Boothe Luce Policy Institute

# 2014

# 2014 Calendar

C R E D I T S



## CLARE BOOTHE LUCE POLICY INSTITUTE

*Preparing and Promoting Conservative Women Leaders*

### Contributors

Catherine Rodriguez,  
**Editor**

Jensen Sutta,  
[www.jensensutta.com](http://www.jensensutta.com)

**Photography**

Tara French Johnson,  
[www.mercy-design.com](http://www.mercy-design.com)

**Graphic Design**

### CBLPI Board

Michelle Easton,

**President**

Frank Donatelli,

**Secretary/Treasurer**

Kellyanne Conway

Barb Kenney

Clare Luce

Ursula Meese

Kate Obenshain

Darla Partridge

Marji Ross

### CBLPI Staff

Michelle Easton,

**President**

Camille Hart,

**Events Director**

Kristen Johnson,

**Accounting Manager**

Jeanne O'Connor,

**Administrative Director**

Catherine Rodriguez,

**Program Director**

Cindy Rushing,

**Administrative Assistant**

Lil Tuttle,

**Education Director**

### CBLPI Board of Directors



Michelle Easton



Frank Donatelli



Kellyanne Conway



Barb Kenney



Clare Luce



Ursula Meese



Kate Obenshain



Darla Partridge



Marji Ross

112 Elden Street • Suite P • Herndon, Virginia • 20170 • (888) 891-4288 • [cblpi.org](http://cblpi.org)  
The 2014 Great American Conservative Women Calendar is a publication of the Clare Boothe Luce Policy Institute, a tax-exempt organization which is organized and operates in accordance with section 501(c)(3) of the Internal Revenue Code. The Institute does not support, endorse or oppose candidates for public office.



# *Clare Boothe Luce*

"No good deed goes unpunished." - Clare Boothe Luce

S M T W T F S

December 2013							31	1	2	3	4			
1	2	3	4	5	6	7								
8	9	10	11	12	13	14								
15	16	17	18	19	20	21								
22	23	24	25	26	27	28								
29	30	31					New Year's Day							
5			6		7		8		9		10		11	
12			13		14		15		16		17		18	
19			20		21		22		23		24		25	
26			27		28		29		30		31		1	
2			3		4		5		6		February 2014			
											1			
											2 3 4 5 6 7 8			
											9 10 11 12 13 14 15			
											16 17 18 19 20 21 22			
											23 24 25 26 27 28			

# January

Playwright-turned-U.S. Ambassador Clare Boothe Luce (1903-1978) – the namesake of the Clare Boothe Luce Policy Institute – was the editor of Vanity Fair, as well as a U.S. Congresswoman from Connecticut. A wife, mother, and a woman of deep faith, Mrs. Luce’s extraordinary sense of humor was epitomized by her famous quote, “no good deed goes unpunished.” Clare Boothe Luce is pictured above speaking at the Republican National Convention in 1944. Her Granddaughter, Clare Luce, serves on the Institute’s Board of Directors.

To host a lecture with a Luce campus speaker at your school, please call 888-891-4288 or visit our website at [www.cblpi.org](http://www.cblpi.org).



Clare Boothe Luce with her daughter Anne.

A close-up portrait of a smiling Black woman with long, dark braids. She is wearing a pink top with a red ruffled neckline and a thin gold chain necklace. The background is a soft-focus outdoor scene with greenery and a body of water.

*Star Parker*

"A house divided cannot stand and we are again, a nation divided: Half-free, half-slave; one half believing in biblical principles and personal responsibility and the other believing in secularism and socialism." - Star Parker

S M T W T F S

<div> <div>January 2014</div> <table> <tr><td></td><td>1</td><td>2</td><td>3</td><td>4</td><td></td><td></td></tr> <tr><td>5</td><td>6</td><td>7</td><td>8</td><td>9</td><td>10</td><td>11</td></tr> <tr><td>12</td><td>13</td><td>14</td><td>15</td><td>16</td><td>17</td><td>18</td></tr> <tr><td>19</td><td>20</td><td>21</td><td>22</td><td>23</td><td>24</td><td>25</td></tr> <tr><td>26</td><td>27</td><td>28</td><td>29</td><td>30</td><td>31</td><td></td></tr> </table> </div>								1	2	3	4			5	6	7	8	9	10	11	12	13	14	15	16	17	18	19	20	21	22	23	24	25	26	27	28	29	30	31								
	1	2	3	4																																												
5	6	7	8	9	10	11																																										
12	13	14	15	16	17	18																																										
19	20	21	22	23	24	25																																										
26	27	28	29	30	31																																											
2	3	4	5	6	7	8																																										
9	10	11	12	13	14	15																																										
16	17	18	19	20	21	22																																										
23	24	25	26	27	28	1																																										
2	3	4	5	6	<div> <div>March 2014</div> <table> <tr><td></td><td></td><td></td><td></td><td></td><td></td><td>1</td></tr> <tr><td>2</td><td>3</td><td>4</td><td>5</td><td>6</td><td>7</td><td>8</td></tr> <tr><td>9</td><td>10</td><td>11</td><td>12</td><td>13</td><td>14</td><td>15</td></tr> <tr><td>16</td><td>17</td><td>18</td><td>19</td><td>20</td><td>21</td><td>22</td></tr> <tr><td>23</td><td>24</td><td>25</td><td>26</td><td>27</td><td>28</td><td>29</td></tr> <tr><td>30</td><td>31</td><td></td><td></td><td></td><td></td><td></td></tr> </table> </div>								1	2	3	4	5	6	7	8	9	10	11	12	13	14	15	16	17	18	19	20	21	22	23	24	25	26	27	28	29	30	31					
						1																																										
2	3	4	5	6	7	8																																										
9	10	11	12	13	14	15																																										
16	17	18	19	20	21	22																																										
23	24	25	26	27	28	29																																										
30	31																																															

# February

Star Parker is the founder and President of CURE, the Center for Urban Renewal and Education, and a nationally syndicated columnist for Scripps News Service, offering weekly editorials to 400 newspapers and internet news sites worldwide. Before involvement in social activism, Star Parker had seven years of first-hand experience in the grip of welfare dependency. After a Christian conversion, she changed her life and today is a sought out commentator on national news networks as an expert on social policy reform.

To host a lecture with a Luce campus speaker at your school, please call 888-891-4288 or visit our website at [www.cblpi.org](http://www.cblpi.org).



Star accepting the 2012 Luce Institute's Conservative Leadership Award which was broadcast on C-SPAN.



***Bay Buchanan***

"In politics, it doesn't matter if something is actually true; it only needs to be spun and repeated as being true. That's how the phony 'war on women' was born." - Bay Buchanan

S M T W T F S

February 2014							25	26	27	28	1
2	3	4	5	6	7	8					
9	10	11	12	13	14	15					
16	17	18	19	20	21	22					
23	24	25	26	27	28						
2	3	4	5	6	7	8					
			Ash Wednesday								
9	10	11	12	13	14	15					
Daylight Savings Time Begins (set clocks one hour ahead)	Clare Boothe Luce's Birthday (1903)										
16	17	18	19	20	21	22					
	St. Patrick's Day			First Day of Spring							
23	24	25	26	27	28	29					
30	31	1	2	3	April 2014						
					1	2	3	4	5		
					6	7	8	9	10	11	12
					13	14	15	16	17	18	19
					20	21	22	23	24	25	26
					27	28	29	30			

## March

President Ronald Reagan thought so highly of Bay Buchanan’s leadership skills that he appointed her to serve as United States Treasurer at age 32. Since then, she has worked tirelessly to shape the national debate on such critical issues as life, immigration, and preserving the American family through her role as a political analyst and host of numerous TV and radio programs. She is the author of *Bay and Her Boys: Unexpected Lessons I Learned as a Single Mom*. Bay was the recipient of the 2002 Conservative Leadership and 2007 Woman of the Year Awards.

To host a lecture with a Luce campus speaker at your school, please call 888-891-4288 or visit our website at [www.cblpi.org](http://www.cblpi.org).



Bay with Luce Policy Institute 2013 summer interns.

A close-up portrait of a woman with long, wavy, light brown hair and blue eyes, smiling warmly at the camera. She is wearing a dark top and a multi-strand necklace. The background is a soft, out-of-focus grey.

***Katie Pavlich***

"Conservatives don't need to change their principles; they need to improve the way they communicate those principles."  
- Katie Pavlich

S M T W T F S

March 2014							1	2	3	4	5				
2	3	4	5	6	7	8	April Fool's Day								
9	10	11	12	13	14	15									
16	17	18	19	20	21	22									
23 30	24 31	25	26	27	28	29									
6		7		8		9		10		11		12			
13		14		15		16		17		18		19			
Palm Sunday										Good Friday		First Day of Passover			
20		21		22		23		24		25		26			
Easter		Easter Monday													
27		28		29		30		1		2		3			
4		5		6		7		8		May 2014					
								1				2		3	
								4				5		6	
								7				8		9	
								10				11		12	
								13				14		15	
								16				17		18	
								19				20		21	
								22				23		24	
								25				26		27	
								28				29		30	
								31							

April

Katie Pavlich is the News Editor for Townhall.com and a Contributing Editor to Townhall Magazine. She is the author of the *New York Times* best seller *Fast and Furious: Barack Obama’s Bloodiest Scandal and Its Shameless Cover-Up* and is a Fox News contributor. As a reporter, she has covered topics ranging from White House scandals and the 2012 presidential election to the Second Amendment and border issues.

A graduate of the University of Arizona with a degree in Journalism, Katie has shared her perspective on multiple media venues including Fox News, CNN, MSNBC, CNBC and Fox Business, in addition to a host of national and local radio shows. Katie is also the recipient of the 2013 Conservative Leadership Award.

To host a lecture with a Luce campus speaker at your school, please call 888-891-4288 or visit our website at [www.cblpi.org](http://www.cblpi.org).



Katie with Luce Policy Institute 2013 spring interns.



***Marsha Blackburn***

"We know that Clare Boothe Luce was a "get it done" woman. In Washington DC, we've got too many 'good old boys'; maybe it's time for 'great new gals'." - Marsha Blackburn

S M T W T F S

<div> <div>April 2014</div> <div> <div>1</div> <div>2</div> <div>3</div> <div>4</div> <div>5</div> </div> <div> <div>6</div> <div>7</div> <div>8</div> <div>9</div> <div>10</div> <div>11</div> <div>12</div> </div> <div> <div>13</div> <div>14</div> <div>15</div> <div>16</div> <div>17</div> <div>18</div> <div>19</div> </div> <div> <div>20</div> <div>21</div> <div>22</div> <div>23</div> <div>24</div> <div>25</div> <div>26</div> </div> <div> <div>27</div> <div>28</div> <div>29</div> <div>30</div> </div> </div>						
4	5	29	30	1	2	3
				National Day of Prayer		
		6	7	8	9	10
				V-E Day (1945)		
11	12	13	14	15	16	17
Mother's Day						Armed Forces Day
18	19	20	21	22	23	24
25	26	27	28	29	30	31
	Memorial Day					
1	2	3	4	5	<div> <div>June 2014</div> <div> <div>1</div> <div>2</div> <div>3</div> <div>4</div> <div>5</div> <div>6</div> <div>7</div> </div> <div> <div>8</div> <div>9</div> <div>10</div> <div>11</div> <div>12</div> <div>13</div> <div>14</div> </div> <div> <div>15</div> <div>16</div> <div>17</div> <div>18</div> <div>19</div> <div>20</div> <div>21</div> </div> <div> <div>22</div> <div>23</div> <div>24</div> <div>25</div> <div>26</div> <div>27</div> <div>28</div> </div> <div> <div>29</div> <div>30</div> </div> </div>	

May

Marsha Blackburn represents Tennessee’s 7th District in the United States House of Representatives. She began her elected service career in 1998 as a Tennessee State Senator and has served in Congress since 2002. She has a reputation for her focus on individual freedom and free enterprise and is a champion of anti-tax and government reform issues. She leads the charge for conservative ideas as Vice Chair of the House Energy and Commerce Committee and serves on the House Budget Committee. Marsha and her husband, Chuck, have raised two children and live in Williamson County, Tennessee.

To host a lecture with a Luce campus speaker at your school, please call 888-891-4288 or visit our website at [www.cblpi.org](http://www.cblpi.org).



Rep. Blackburn at A Conservative Women’s Network event co-hosted by The Luce Policy Institute and The Heritage Foundation.



## *Rebecca Kleefisch*

"Sitting on the couch yelling at the TV wasn't helping. After doing laundry, cooking, cleaning, raising two little girls and working during naptime, I realized that if the leaders on TV were not going to fix the situation, then fine, I'll do that, too."

- Rebecca Kleefisch

S M T W T F S

May 2014				27	28	29	30	31
			1	2	3			
4	5	6	7	8	9	10		
11	12	13	14	15	16	17		
18	19	20	21	22	23	24		
25	26	27	28	29	30	31		
1	2	3	4	5	6	7		
					D-Day (1944)			
8	9	10	11	12	13	14		
						Flag Day		
15	16	17	18	19	20	21		
Father's Day						First Day of Summer		
22	23	24	25	26	27	28		
29	30	1	2	3	July 2014			
						1	2	3
						4	5	6
						7	8	9
						10	11	12
						13	14	15
						16	17	18
						19	20	21
						22	23	24
						25	26	27
						28	29	30
						31		

# June

Rebecca Kleefisch, a former small-business owner and news reporter, serves as Wisconsin's 44th Lieutenant Governor to which she was elected in 2010. She has played a key role in business growth and retention for Wisconsin and is widely credited for coining the phrase "Wisconsin is Open for Business." She fought against the unions with Governor Scott Walker and handily survived a recall election, becoming the first Lieutenant Governor to face and win a recall election. She is the mother of two daughters and lives in Oconomowoc with her husband and family.

To host a lecture with a Luce campus speaker at your school, please call 888-891-4288 or visit our website at [www.cblpi.org](http://www.cblpi.org).



Lt. Gov. Kleefisch with students at the Luce Policy Institute's 2013 Western Women's Summit.



***Nonie Darwish***

"It's shocking that liberal women's groups in America ignore the extreme oppression of Muslim women worldwide. Freedom shouldn't be a partisan issue." - Nonie Darwish

S

M

T

W

T

F

S

<div>June 2014</div> <div> <div>1234567</div> <div>891011121314</div> <div>15161718192021</div> <div>22232425262728</div> <div>2930</div> </div>							1	2	3	4	5
6	7	8	9	10	11	Independence Day	12				
13	14	15	16	17	18		19				
20	21	22	23	24	25		26				
27	28	29	30	31		1	2				
3	4	5	6	7	<div>August 2014</div> <div> <div>12</div> <div>3456789</div> <div>10111213141516</div> <div>17181920212223</div> <div>24/31252627282930</div> </div>						

July

Few women leaders today are as passionately outspoken in advocating for the rights of women oppressed by Islamic extremism as Nonie Darwish. Born and raised as a Muslim in Egypt and Gaza in the heart of the Arab-Israeli conflict in the 1950s to 1970s, Nonie has firsthand experience living under Islamic Law called Sharia.

She founded the groups Arabs for Israel and Former Muslims United and is the author of books *The Devil We Don't Know*, *Now They Call me Infidel*, and *Cruel and Usual Punishment*. Nonie received the Woman of Exceptional Courage Award from the Clare Boothe Luce Policy Institute in 2008.

To host a lecture with a Luce campus speaker at your school, please call 888-891-4288 or visit our website at [www.cblpi.org](http://www.cblpi.org).



Nonie at a Luce Policy Institute Afternoon with an Author event which was broadcast on C-SPAN.



***Cleta Mitchell***

"Everybody wants to be liked, but it is far more important to be respected. Respect is earned; you get it no other way." - Cleta Mitchell

S M T W T F S

July 2014							29		30		31		1		2	
	1	2	3	4	5											
6	7	8	9	10	11	12										
13	14	15	16	17	18	19										
20	21	22	23	24	25	26										
27	28	29	30	31												
3		4		5		6		7		8		9				
10		11		12		13		14		15		16				
17		18		19		20		21		22		23				
24		25		26		27		28		29		30				
31		1		2		3		4		September 2014						
										1	2	3	4	5	6	
										7	8	9	10	11	12	13
										14	15	16	17	18	19	20
										21	22	23	24	25	26	27
										28	29	30				

# August

Cleta Mitchell is a longtime fighter in the conservative trenches and a leading attorney in election law. In 2013, Cleta led the charge to uncover the truth about IRS targeting and abuse of conservative groups, including filing lawsuits in federal court to force the IRS and its employees to tell the American people the truth about what they have done to conservatives. She received the Institute’s 2013 Woman of the Year Award.

She is a partner in the Washington, DC office of Foley & Lardner LLP and has more than 40 years of experience in law, politics, and public policy. She has testified before Congress on election law, campaign finance, and lobbying and ethics laws, and is a frequent speaker and guest commentator on political law. She received her B.A. and J.D. from the University of Oklahoma and is a wife and mother.

To host a lecture with a Luce campus speaker at your school, please call 888-891-4288 or visit our website at [www.cblpi.org](http://www.cblpi.org).



Cleta addressing students at a 2013 Luce Policy Institute Intern Training Seminar.



***Michele Bachmann***

"Life is short. Although it will make you a target of the Left, make the most of every opportunity to make this world a better place."  
- Michele Bachmann

S M T W T F S

<div> <div>August 2014</div> <div> <div>1</div> <div>2</div> </div> <div> <div>3</div> <div>4</div> <div>5</div> <div>6</div> <div>7</div> <div>8</div> <div>9</div> </div> <div> <div>10</div> <div>11</div> <div>12</div> <div>13</div> <div>14</div> <div>15</div> <div>16</div> </div> <div> <div>17</div> <div>18</div> <div>19</div> <div>20</div> <div>21</div> <div>22</div> <div>23</div> </div> <div> <div>24</div> <div>25</div> <div>26</div> <div>27</div> <div>28</div> <div>29</div> <div>30</div> </div> <div> <div>24</div> <div>31</div> </div> </div>						
26	27	28	29	30		
31	1	2	3	4	5	6
	Labor Day					
7	8	9	10	11	12	13
Grandparents Day				Patriot Day		
14	15	16	17	18	19	20
			Constitution Day		POW/MIA Recognition Day	
21	22	23	24	25	26	27
		First day of Fall	Rosh Hashanah			
28	29	30	1	2	<div> <div>October 2014</div> <div> <div>1</div> <div>2</div> <div>3</div> <div>4</div> </div> <div> <div>5</div> <div>6</div> <div>7</div> <div>8</div> <div>9</div> <div>10</div> <div>11</div> </div> <div> <div>12</div> <div>13</div> <div>14</div> <div>15</div> <div>16</div> <div>17</div> <div>18</div> </div> <div> <div>19</div> <div>20</div> <div>21</div> <div>22</div> <div>23</div> <div>24</div> <div>25</div> </div> <div> <div>26</div> <div>27</div> <div>28</div> <div>29</div> <div>30</div> <div>31</div> </div> </div>	

# September

Congresswoman Michele Bachmann proudly represents the 6th District of Minnesota as an unwavering defender of constitutional conservatism in Congress. She is the first woman to be elected to the U.S. House of Representatives from Minnesota and her example has served as an inspiration to the young women who have heard her at Luce Policy Institute events. She received the 2010 Clare Boothe Luce Policy Institute Conservative Leadership Award. She is a wife and mother of five and has opened her home to twenty-three foster children.

To host a lecture with a Luce campus speaker at your school, please call 888-891-4288 or visit our website at [www.cblpi.org](http://www.cblpi.org).



Rep. Bachmann with a Luce Policy Institute 2012 summer intern.



***Michelle Malkin***

"Social media isn't the milieu of the Left anymore. We are knitting together a sorority of conservative female foot soldiers, and we never need to be steamrolled by liberals who have no facts on their side." - Michelle Malkin

S M T W T F S

September 2014							30	1	2	3	4
1	2	3	4	5	6						
7	8	9	10	11	12	13					
14	15	16	17	18	19	20					
21	22	23	24	25	26	27					
28	29	30									
5	6	7	8	9	10	11					
12	13	14	15	16	17	18					
	Columbus Day										
19	20	21	22	23	24	25					
26	27	28	29	30	31	1					
					Halloween						
2	3	4	5	6	November 2014						
											1
											2
											3
											4
											5
											6
											7
											8
											9
											10
											11
											12
											13
											14
											15
											16
											17
											18
											19
											20
											21
											22
											23
											24
											25
											26
											27
											28
											29
											30

October

Michelle Malkin is a #1 *New York Times* best-selling author of four books, including *Culture of Corruption* and *Invasion*. She is a FOX News Channel contributor and is known for being a trailblazer in the blogosphere, where she founded three of America’s most popular conservative blogs: Hot Air, Twitchy, and michellemalkin.com.

Michelle is a mother of two and has been married for 20 years. She was the recipient of the Clare Boothe Luce Policy Institute’s 2004 Conservative Leadership Award and 2006 Woman of the Year Award.

To host a lecture with a Luce campus speaker at your school, please call 888-891-4288 or visit our website at [www.cblpi.org](http://www.cblpi.org).



Michelle with students at the Luce Policy Institute Western Women’s Summit.



***Jan Brewer***

"Conservative women are making great strides in this country, and they're doing it through hard work, responsibility, honesty, integrity, and courage. " - Jan Brewer

S

M

T

W

T

F

S

<div>October 2014</div> <div> <div>1</div> <div>2</div> <div>3</div> <div>4</div> </div> <div> <div>5</div> <div>6</div> <div>7</div> <div>8</div> <div>9</div> <div>10</div> <div>11</div> </div> <div> <div>12</div> <div>13</div> <div>14</div> <div>15</div> <div>16</div> <div>17</div> <div>18</div> </div> <div> <div>19</div> <div>20</div> <div>21</div> <div>22</div> <div>23</div> <div>24</div> <div>25</div> </div> <div> <div>26</div> <div>27</div> <div>28</div> <div>29</div> <div>30</div> <div>31</div> </div>						
2	3	4	5	6	7	8
Daylight Savings Time Ends (Shift Clocks Back One Hour)		Election Day				
9	10	11	12	13	14	15
		Veterans Day				
16	17	18	19	20	21	22
23	24	25	26	27	28	29
				Thanksgiving Day		
30	1	2	3	4	<div>December 2014</div> <div> <div>1</div> <div>2</div> <div>3</div> <div>4</div> <div>5</div> <div>6</div> </div> <div> <div>7</div> <div>8</div> <div>9</div> <div>10</div> <div>11</div> <div>12</div> <div>13</div> </div> <div> <div>14</div> <div>15</div> <div>16</div> <div>17</div> <div>18</div> <div>19</div> <div>20</div> </div> <div> <div>21</div> <div>22</div> <div>23</div> <div>24</div> <div>25</div> <div>26</div> <div>27</div> </div> <div> <div>28</div> <div>29</div> <div>30</div> <div>31</div> </div>	

November

Guided by her devotion to family, faith in God and love of country, Jan Brewer has led a distinguished career of public service. Prior to her election as Arizona’s 22nd Governor in 2009, she was inspired to run for state office out of concern for her children’s education. She implemented her winning formula of Conservative leadership, free-market principles, and a willingness to make tough decisions to lead the charge in Arizona for critical reforms in education, healthcare, and immigration. She and her husband, John, have raised three children.

To host a lecture with a Luce campus speaker at your school, please call 888-891-4288 or visit our website at [www.cblpi.org](http://www.cblpi.org).



Gov. Brewer with students at the 2013 Luce Policy Institute Western Women’s Summit.



***KT McFarland***

"Foreign policy is a woman's issue, because our economy, our energy, our jobs, and our safety depend on it." - KT McFarland

S M T W T F S

November 2014		25	26	27	28	29
<div> <div>1</div> <div>23 30</div> <div>2 3 4 5 6 7 8</div> <div>9 10 11 12 13 14 15</div> <div>16 17 18 19 20 21 22</div> <div>23 30 24 25 26 27 28 29</div> </div>						
30	1	2	3	4	5	6
7	8	9	10	11	12	13
Pearl Harbor Remembrance Day						
14	15	16	17	18	19	20
		First Day of Hanukkah				
21	22	23	24	25	26	27
First Day of Winter			Christmas Eve	Christmas Day		
28	29	30	31	1	January 2015	
			New Year's Eve		<div> <div>1 2 3</div> <div>4 5 6 7 8 9 10</div> <div>11 12 13 14 15 16 17</div> <div>18 19 20 21 22 23 24</div> <div>25 26 27 28 29 30 31</div> </div>	

# December

Kathleen Troia “KT” McFarland is FOX News’ National Security Analyst and appears regularly on FOX News and FOX Business News. She is also the host of FOXNews.com’s DEFCON 3, one of the internet’s most watched national security shows, and she writes a column for FOXnews.com, DEFCON 3 by KT. She held national security posts in the Nixon, Ford and Reagan Administrations and received the Defense Department’s highest civilian award for her work in the Reagan Administration.

She is a graduate of George Washington University (BA), Oxford University (BA, MA) and the Massachusetts Institute of Technology (PhD program, all but dissertation) with concentrations on nuclear weapons, China and the Soviet Union. She is a wife and mother of five.

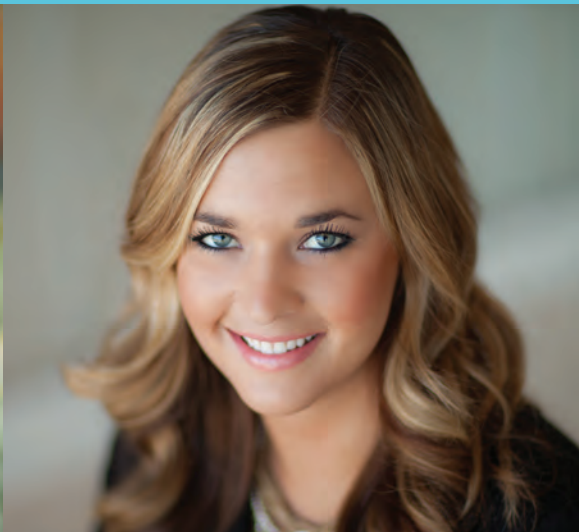
To host a lecture with a Luce campus speaker at your school, please call 888-891-4288 or visit our website at [www.cblpi.org](http://www.cblpi.org).



KT speaking to students at a Conservative Leadership Seminar.



## Clare Boothe Luce Policy Institute Calendar



*Great American  
Conservative Women*

**2014**

The 2014 Great American Conservative Women Calendar is a publication of the Clare Boothe Luce Policy Institute, a tax-exempt organization which is organized and operates in accordance with section 501(c)(3) of the Internal Revenue Code. The Institute does not support, endorse or oppose candidates for public office.

112 Elden Street • Suite P • Herndon, Virginia • 20170  
(888) 891-4288 • [cblpi.org](http://cblpi.org)